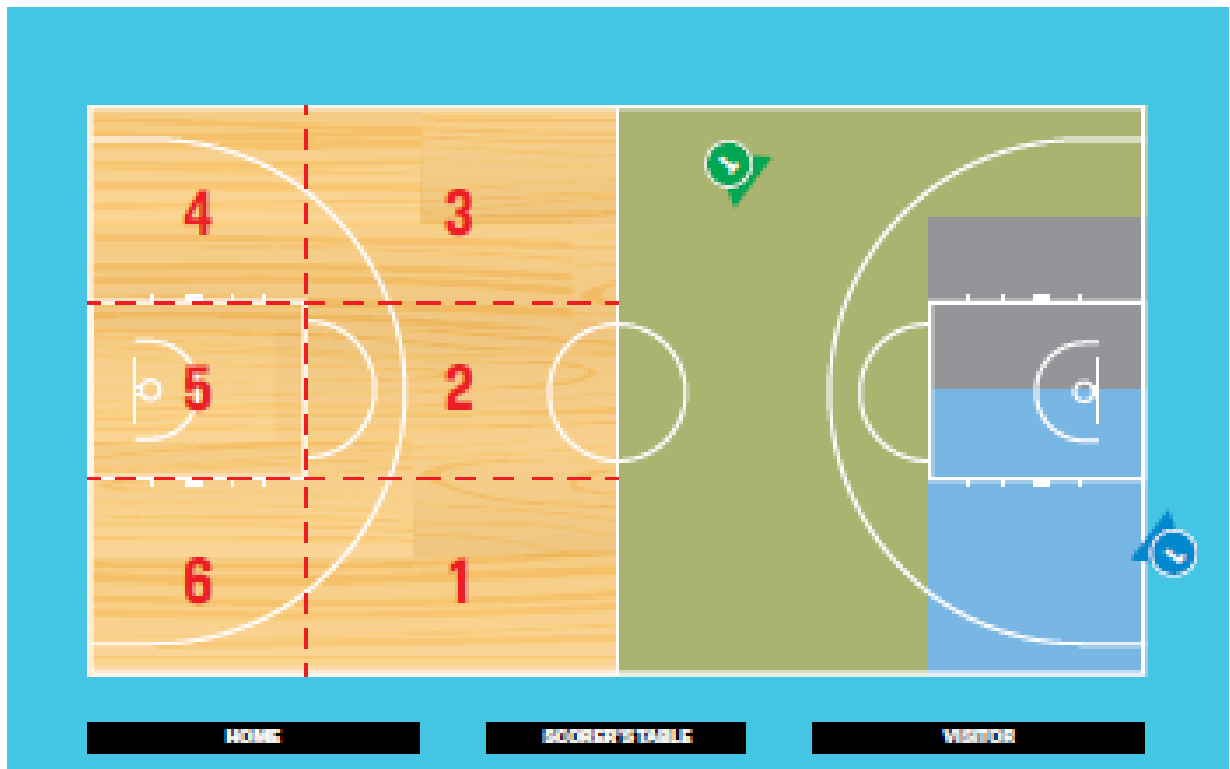


## #2 JUNIOR REFEREE TRAINING SHEET

### Area of responsibilities (AOR):



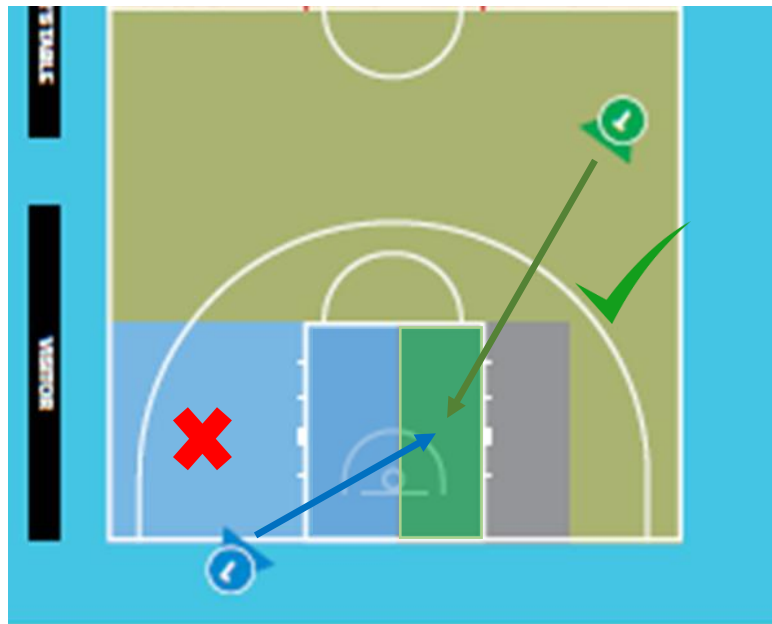
Modern officiating requires the two (2) referees to work in co-operation with each other, one (1) referee taking responsibility for on-the-ball and the other for off-the-ball coverage.

In order to achieve proper coverage, the two (2) referees should seek to obtain the best possible position to judge the play, using the system of mechanics contained in this training sheet as a guideline.

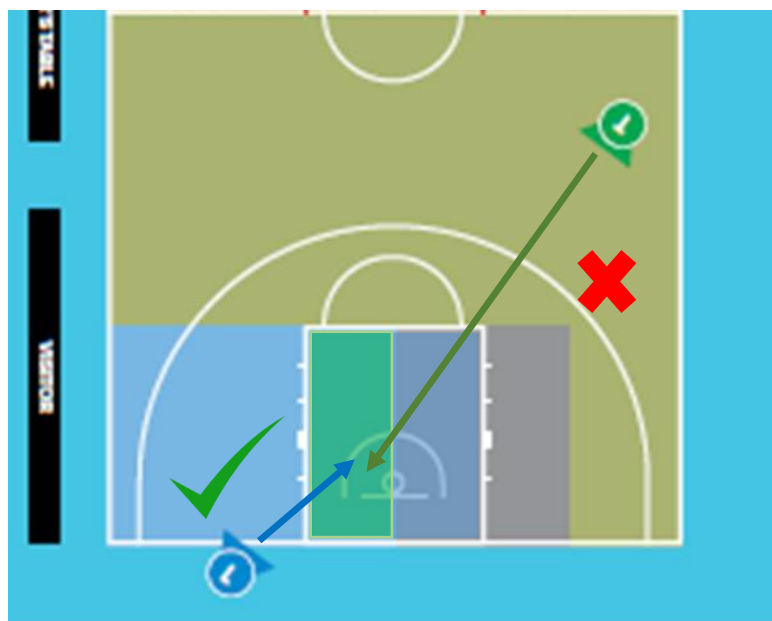
To simplify this, each half of the playing court has been divided into rectangles, numbered 1 to 6 (left side) on the right side of the court are the areas of the court that the officials have to cover (green by the Trail, blue by the Lead, and grey by both (should only be a help call from LEAD, remember to be patient on the whistle, to allow a call from trail before making the call))

## Aera 5

No cross calls on high action play from LEAD on “right side of area 5”. It is TRAIL’S primary coverage area and only a HELP call from LEAD remembering to be patient on the whistle, to allow a call from TRAIL before making the call.

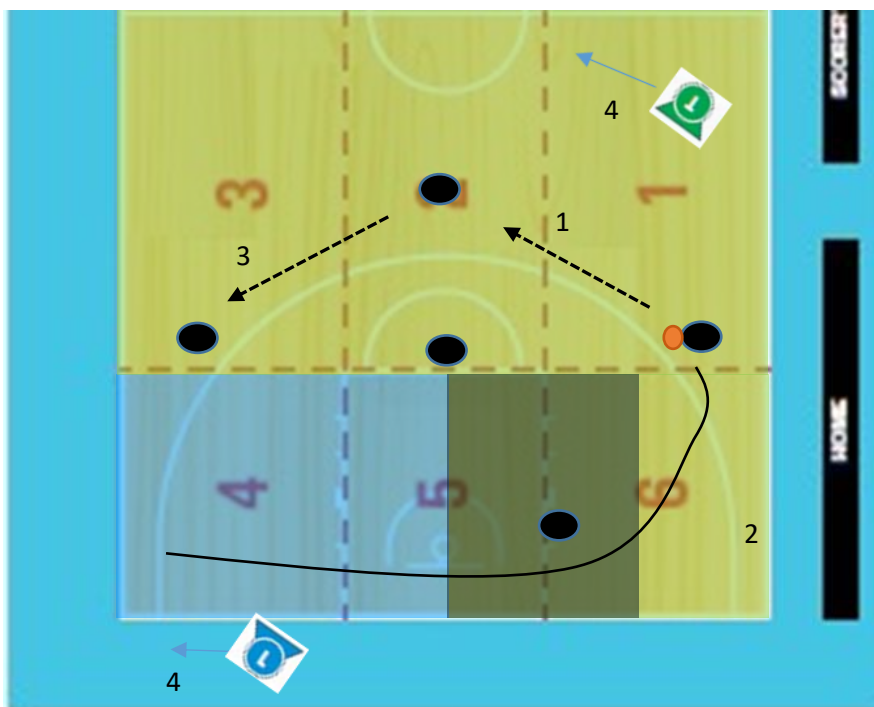
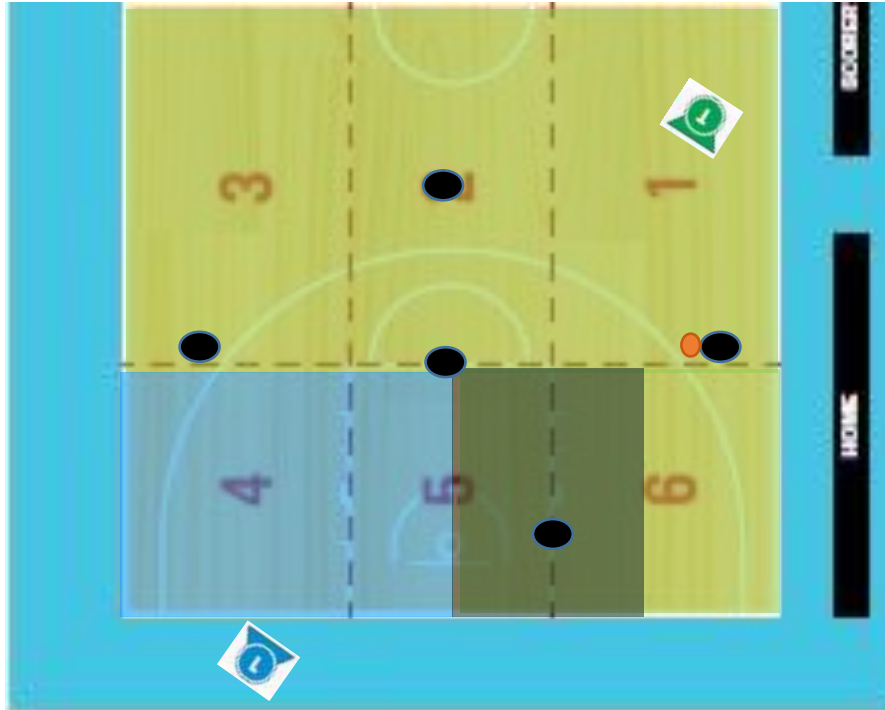


No cross call on high action play from TRAIL on right side of area 5. It is LEAD’S primary coverage area and only a HELP call from TRAIL remembering to be patient on the whistle, to allow a call from LEAD before making the call.

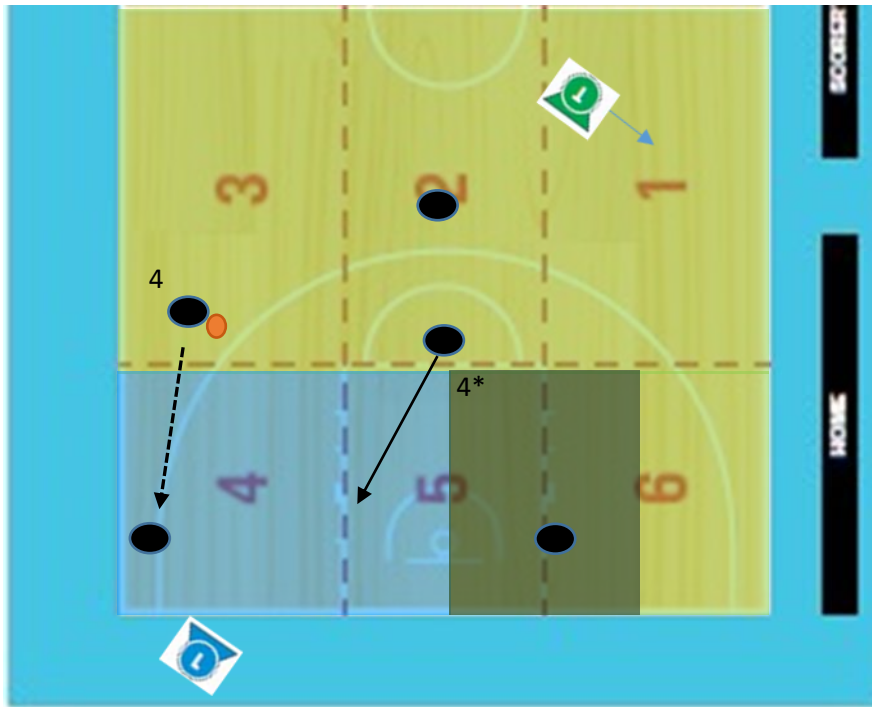


**Game situation:** Simple Swing and post play to introduce  $\frac{3}{4}$  area

**Initial positions:**



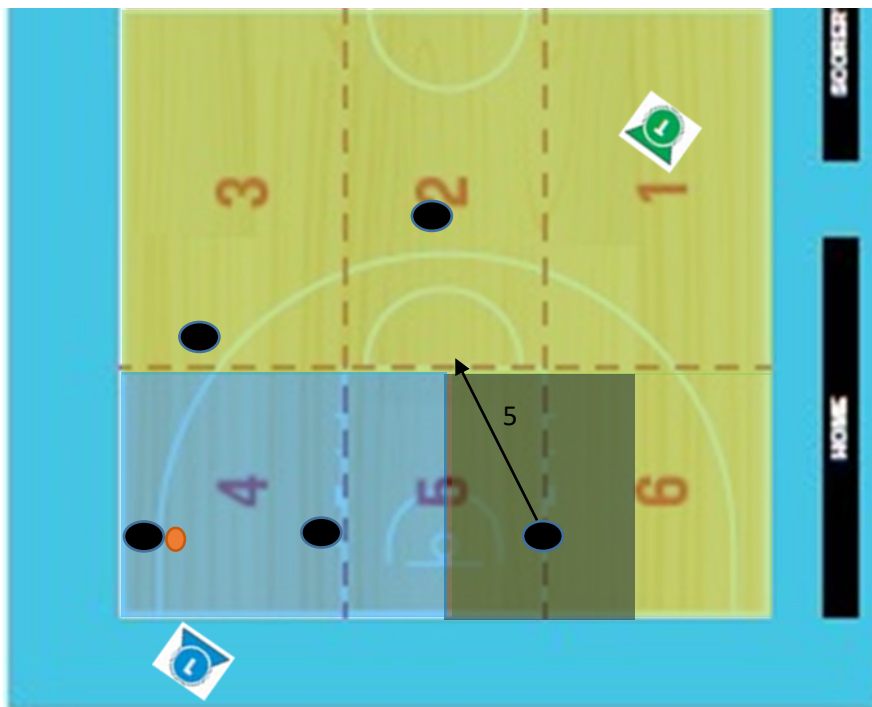
- 1-Pass
  - 2-Cut
  - 3-Pass
- Trail and Lead adjust their position as indicated at number 4 during the movement as indicated at number 3. (Lead moves as wide as the last defender)



4-Pass

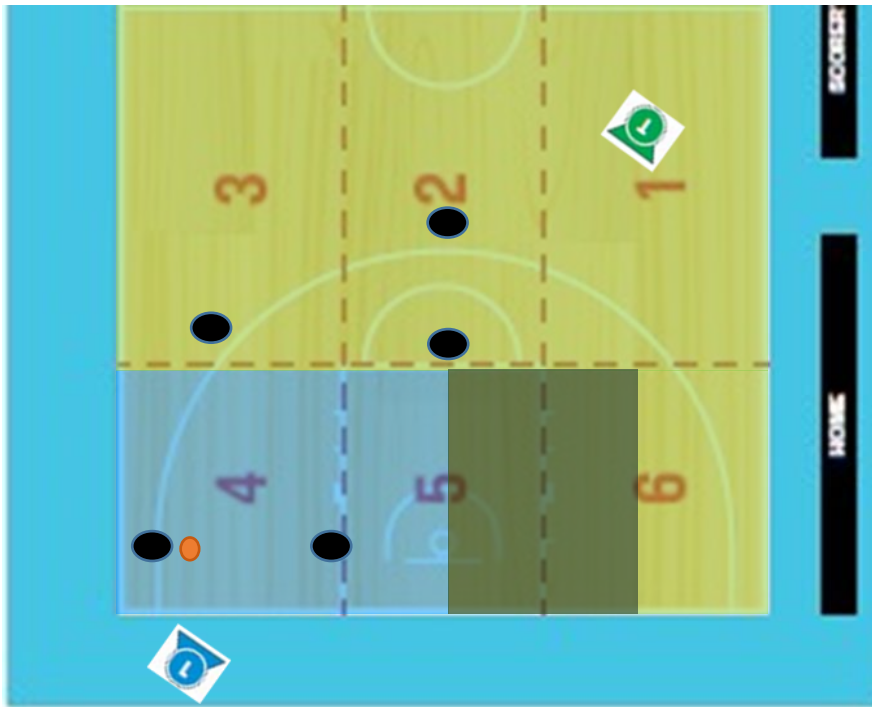
4\*-Cut

When Lead takes ball in primary area, trail moves and adjusts position to officiate primary area (off ball)



Trail officiates the movement as indicated at number 5.

**Final positions:**



**NB:** At all time officials shall keep a 45-degree angle from the play